



ARTIST

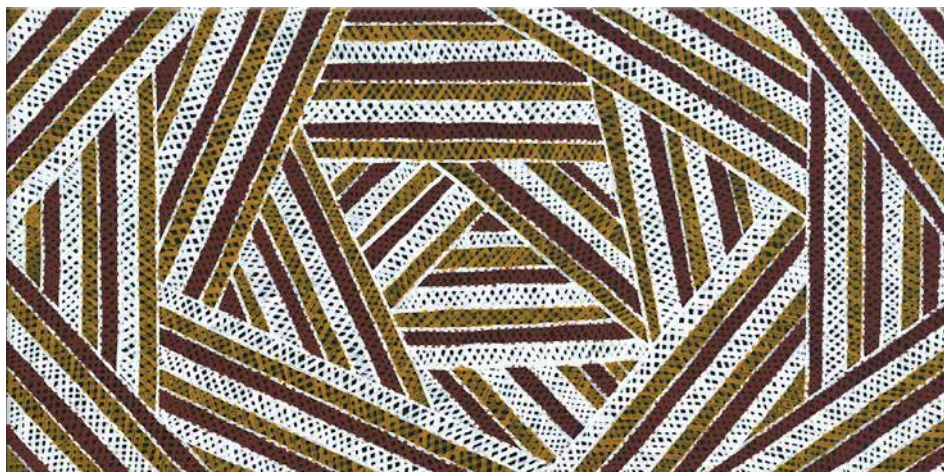
RUSSELLINA  
PURUNTATAMERI

TITLE

JILAMARA TIWI ART  
TIWI WAY

REGION

TIWI ISLANDS



Russellina Puruntatameri, a proud Tiwi woman from the Tiwi Islands which is 80kms north of Darwin. Russellina developed her artistic skills from her family back home, where she grew up at Pirlangimpi Garden point, at the Munupi Arts Centre, by watching and listening to their stories.

In Tiwi language, Jilamara means design. The designs are originally drawn from the body painting which accompanied the Pukumani (funeral) and Kulama (initiation/yam) ceremonies, clan totems and Tiwi creation stories.

The Jilamara (design) is used for body painting to protect from mapurtiti (spirits of the dead). The Tiwi palette of red, yellow, white and black are made from natural ochre pigments sourced from the land.